

# Mindworks Surrey Outcomes:

**Statement:**  
Reporting is taking place with agreed MDS for both GBO and ESQ with operational implementation plan in place with agreed actions. .

- Goals:**
- To continue to demonstrate distance travelled and SDM with GBO.
  - To be able to demonstrate quarterly improvements of meaningful change.
  - To understand alliance wide CYPF experience of services through MDS ESQ.
  - To focus on strategic indicators with agreed preference data.
  - To deliver on 6-month implementation plan as an alliance.

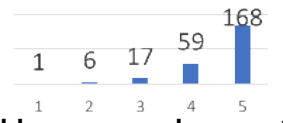
GBO	QUARTER 4		QUARTER 1		QUARTER 2		QUARTER 3	
	Number (* cases out of * cases)	%	Number (* cases out of * cases)	%	Number (* cases out of * cases)	%	Number (* cases out of * cases)	%
Metric								
The number and % of discharged referrals with paired outcomes that show an <b>improvement</b> in all their goals compared to target. Contractual Target: 70%	791 out of 1056	74.9	639 out of 808	79	610 out of 777	78.5	737 out of 876	84
The number and % of discharged referrals, with paired outcomes by change score. 1. <b>Meaningful Change</b> 2. <b>Improvement</b> 3. <b>No Change</b> 4. <b>Deterioration</b>	487 out of 1056	46.2	436 out of 808	54	360 out of 777	46.3	496 out of 876	57
	302 out of 1056	28.6	203 out of 808	25	250 out of 777	32.2	256 out of 876	29
	155 out of 1056	14.7	95 out of 808	11.8	123 out of 777	15.8	91 out of 876	10
	109 out of 1056	10.3	74 out of 808	9.2	44 out of 777	5.7	33 out of 876	4
The number and % of <b>discharged referrals</b> with at least one paired outcomes. CQUIN Target: 50%	1056 out of 6255 discharges	16.9	808 cases out of 6954 discharges	11.6	777 cases out of 2715 discharges	28.6	876 out of ~1900~ discharges	~45 - 50 ~
Average length of referral with paired scores.	8 weeks	-	9 weeks	-	8 weeks	-	5 weeks	-

## ESQ for Q3.

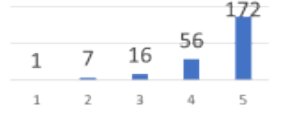
Did you agree goals to work towards -



Please rate your overall experience of support - 4.59 /5

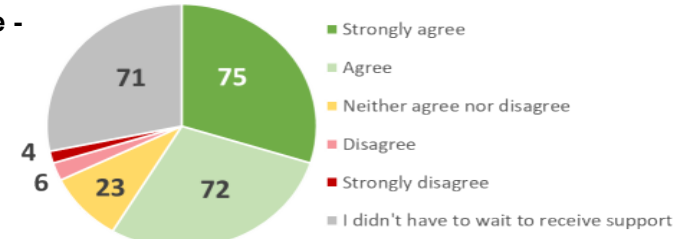
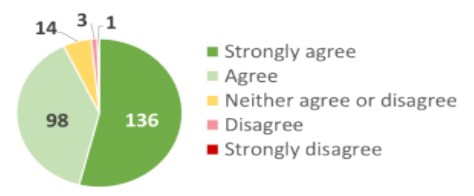


I would recommend support to a friend - 4.55 /5

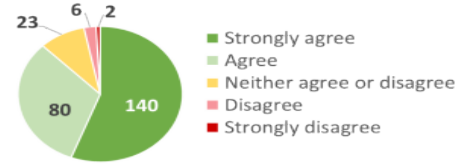


I felt supported while waiting for support:

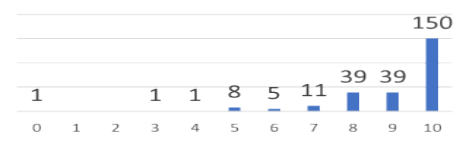
I understood the information given to me -



The support I received met my needs -



I felt that the things about my wellbeing that matter most to me and my family were listened to - 9.07/10



**Future developments:** There is a need to report outcomes from a THRIVE perspective as the systemwide delivery framework.

- Develop and agree MDS template within quality sub-group.
- Review and map current reporting taking place.
- Agree with commissioners and partners MDS for THRIVE like ways of working.
- Agree reporting timelines across the alliance.

This page is intentionally left blank